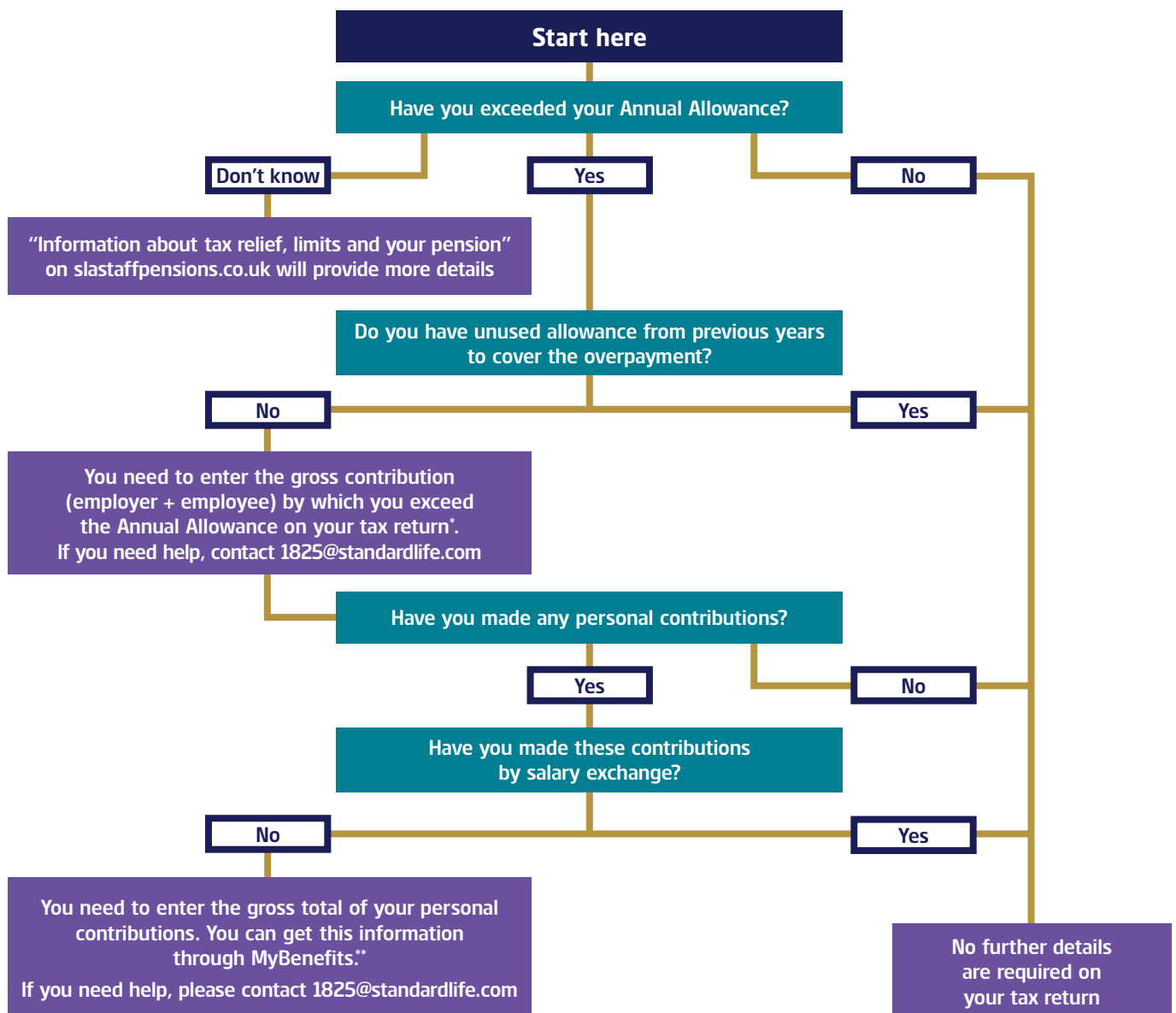


Do I have to enter pension details on my tax return?

1825

Financial Planning
from Standard Life

Answer these questions for the relevant tax year. You should include any other pension schemes that you may have paid into, in addition to your Standard Life Aberdeen pension.



*contributions in excess of the Annual Allowance should be added in Box 10 under 'Pensions Savings Tax Charges' on page Ai4 (SA101 2019). The PSTR for the Standard Life Aberdeen scheme (needed for Box 12) is 10006691.

**personal contributions should be added in Box 1 under 'Tax Reliefs' on page TR4 (SA100 2019)

'1825' is the brand for Standard Life Aberdeen group's UK financial planning and advice business.

'1825' is a trading name used by 1825 Financial Planning and Advice Limited, which is part of the Standard Life Aberdeen group (Standard Life Aberdeen plc and its subsidiaries). 1825 Financial Planning and Advice Limited is registered in England (01447544) at Bow Bells House, 1 Bread Street, London, England, EC4M 9HH and is authorised and regulated by the Financial Conduct Authority. www.1825.com